

**USACE Portland District (NWP) FFDRWG Update Form
5 February 2015**

PROJECT INFORMATION

Project Title	Minor Fishway Modifications to Improve Lamprey Passage
SCT Reference Number	
Project Manager (PM)	Gail Saldana (503-808-4781)
Technical Lead (TL)	Scott Wilcox, Small Projects Team (503-808-4435)
Biologist/Coordination	Sean Tackley (503-808-4751)

PROJECT DESCRIPTION

The scope of this project includes relatively small-scale modifications to adult fish ladders to improve lamprey passage conditions at Bonneville, The Dalles, and John Day Dams. Examples of such modifications include floor diffuser plating, rounding corners, and modifications to entrance weir crests. This is a multi-year, phased project. Generally, the PDT will focus on modifying a single ladder per year.

CURRENT SCHEDULE

- The Dalles (TDA) East Ladder: Lower ladder diffuser plating (IWW period 2013-2014); Entrance weir improvements (2017-2018).
- TDA North Ladder: Lower ladder diffuser plating/ramping and entrance weir improvements (2017-2018).
- John Day (JDA) South Ladder: Lower ladder diffuser plating (2013-2014); Entrance weir improvements (2016-2017), rounding corners and modify wall diffuser to exclude lamprey near SE1 in lower fishway (2016-2017).
- Bonneville (BON) WA Shore Ladder: Lower ladder diffuser plating (***2016-2017**) and entrance weir improvements (2014-2015, ***2016-2017**)
- BON Bradford Island Ladder: Entrance weir improvements, and serpentine weir modifications (2015-2016)
- Other modifications, as identified and prioritized (through 2018).

*** Indicates schedule change.**

PROGRESS AND KEY ISSUES (List)

1. Missed window for awarding contract executing 2014-15 IWW period installation of diffuser plating at BON WA Shore Ladder. New plan is to award contract for fabrication of plating in 2015 and install when practicable (likely 2016-17 IWW period).
2. BON Project is fabricating and installing new rounded entrance weir caps at all four main BON WA Shore entrance weirs (Figure 1). Caps have been installed on the South Upstream Entrance (SUE) and South Downstream Entrance (SDE) weirs. The north end of the lower fishway was not dewatered this winter, so entrance weirs at that location are under water. BON riggers could not determine a way to safely/feasibly to remove the gates watered up, and dewatering the fishway for removal would have taken a lot of time and effort away from response to a sinkhole that has developed at Cascades Island. Remaining two caps will have to be installed during the 2016-17 IWW period, or as the opportunity arises.
3. Initial scoping and design work for BON Bradford Island Ladder to begin (February-March 2015)
4. Based on reduced lamprey program funding in FY15 (and likely in FY16), the PDT needs to revisit project scope, schedule, and priorities through 2018 (February-March 2015). This will be coordinated with tribal representatives and FFDRWG. Most urgent need is to identify specific actions and schedule for BON Bradford Island Ladder (2015-16 IWW period construction).

FFDRWG REVIEW NEEDED AT MEETING? (If YES, list discussion topics below)

No design review needed at this time.

1. FFDRWG input will be requested soon (August – October 2014) for entrance weir crest modifications that are currently being designed (Figure 1) for IWW period 2014-2015 installation.
2. The next phase of this project (2015-2016 IWW period construction) will focus on Bradford Island Fish Ladder, including possible modifications to the serpentine weir section of the ladder (rounding corners, installation of lamprey orifices, etc). FFDRWG and SRWG will be engaged as design concepts are developed and RME needs are identified.

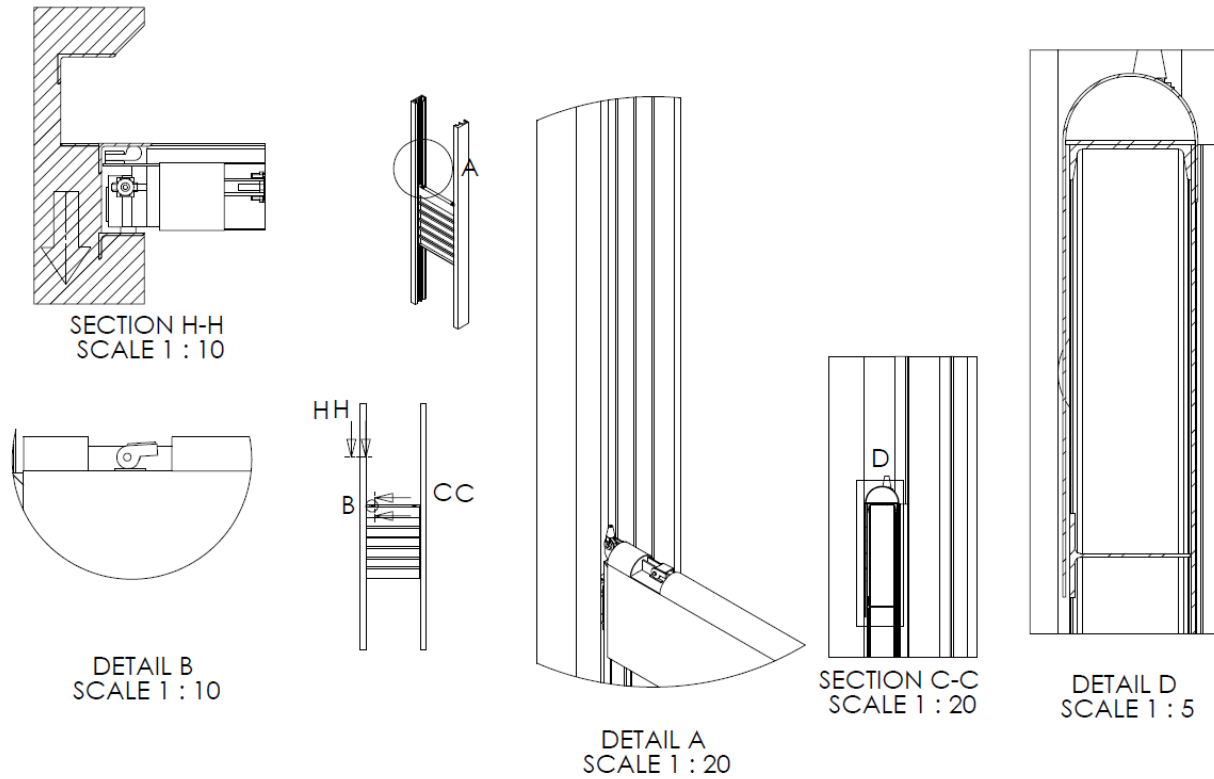


Figure 1. Design drawings for entrance weir crest modifications to improve lamprey passage. Modifications include radiused weir caps, plating on the downstream face of the weir, and plating (not shown) to provide attachment surface over a small portion of guide slot(s). This design will not affect operation of the weir and at the WA Shore Ladder, the modifications will not affect the cross-sectional area of the entrance when the weir is in its lowest position.



Figure 2. BON WA Shore Ladder entrance weir crest improvements, including photo of installed cap at one of the south entrances for reference.